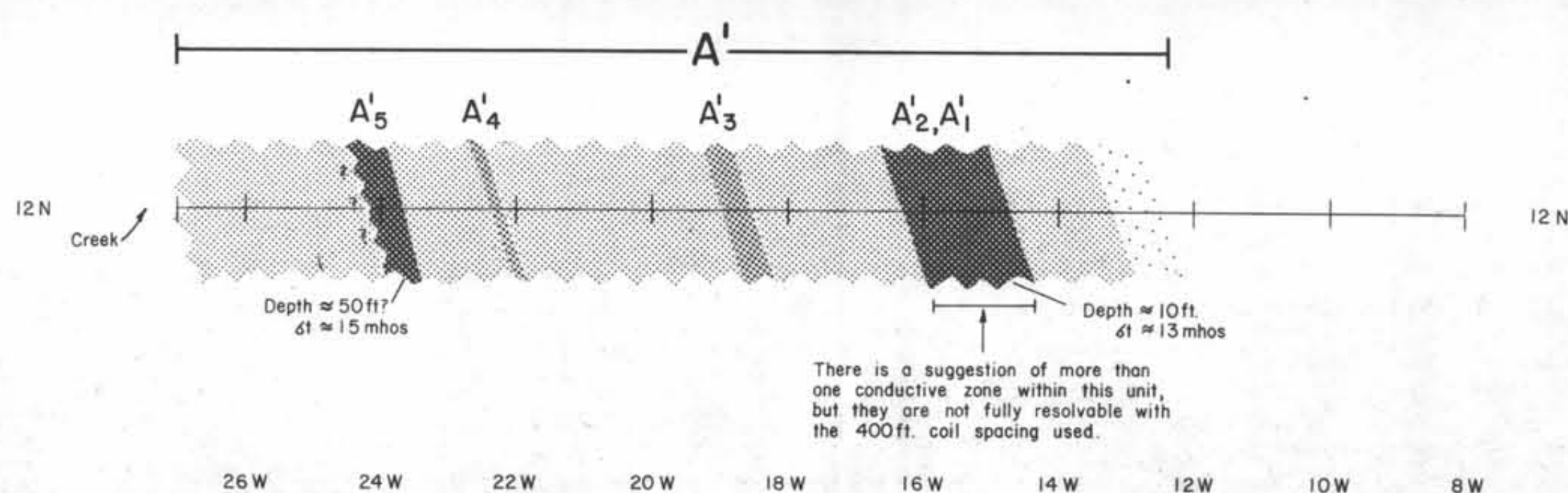
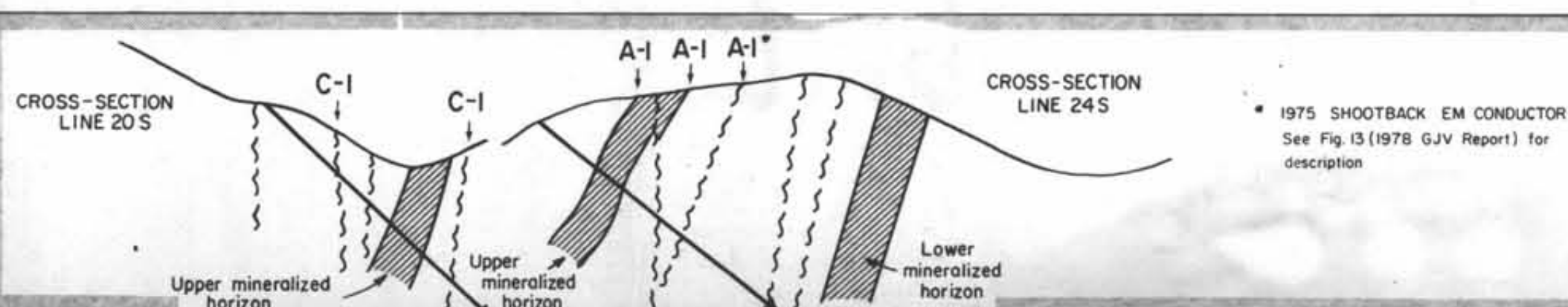
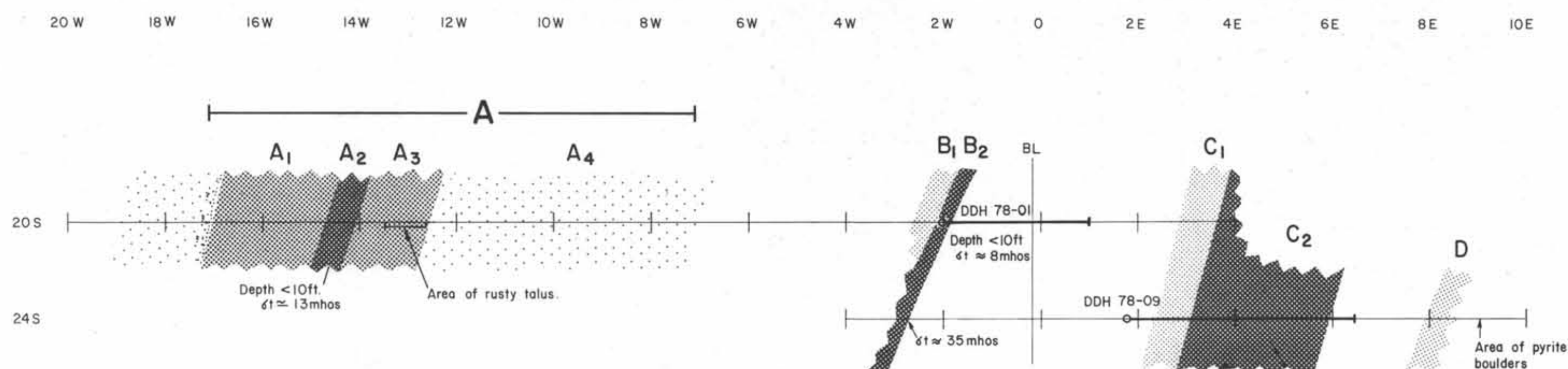
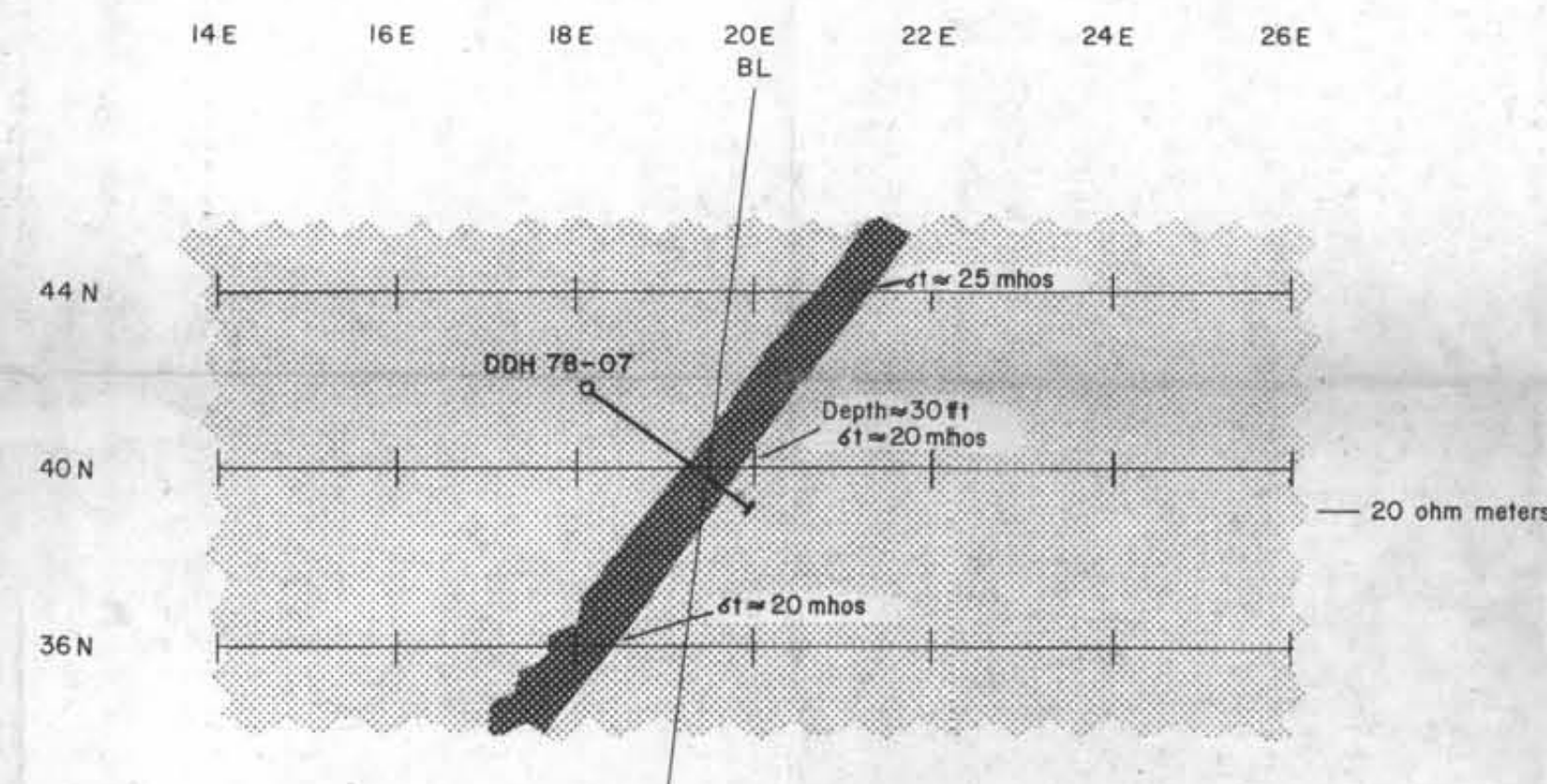
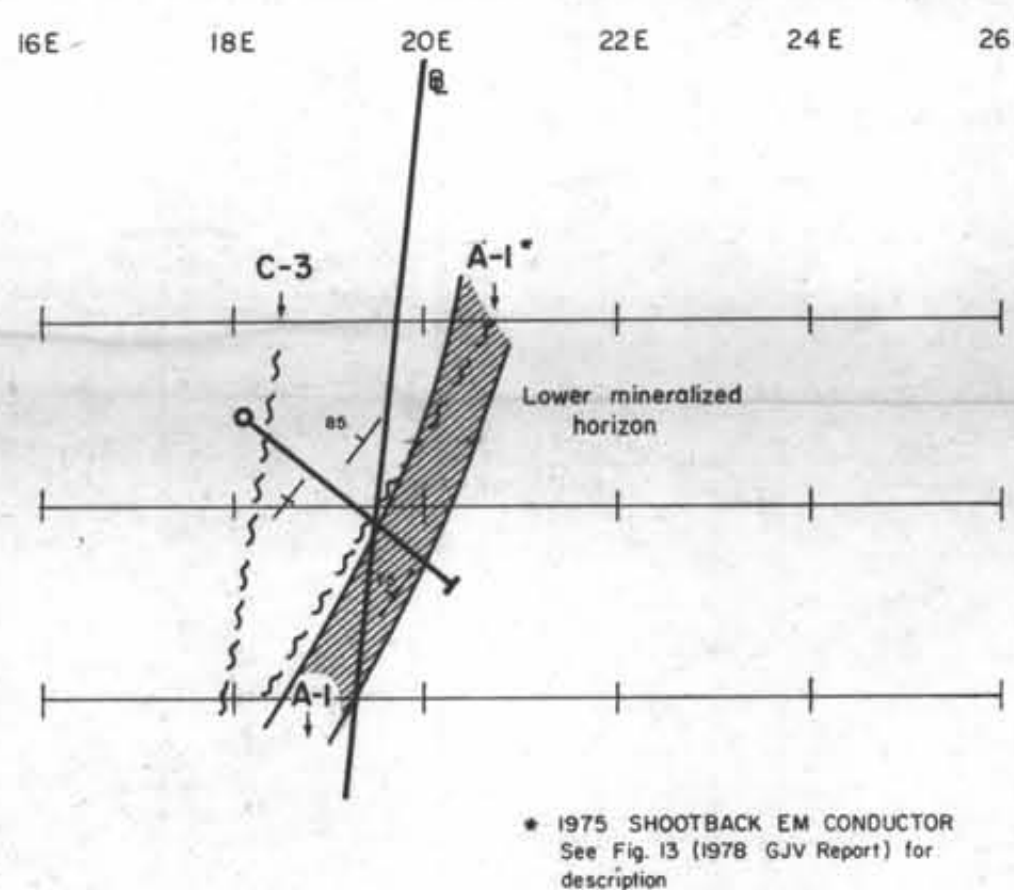
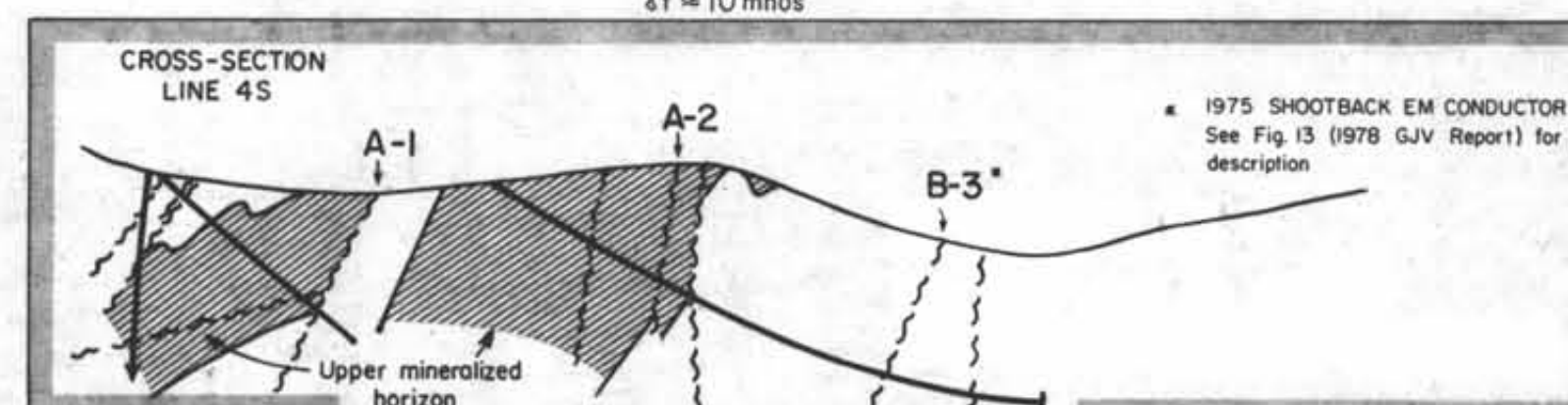
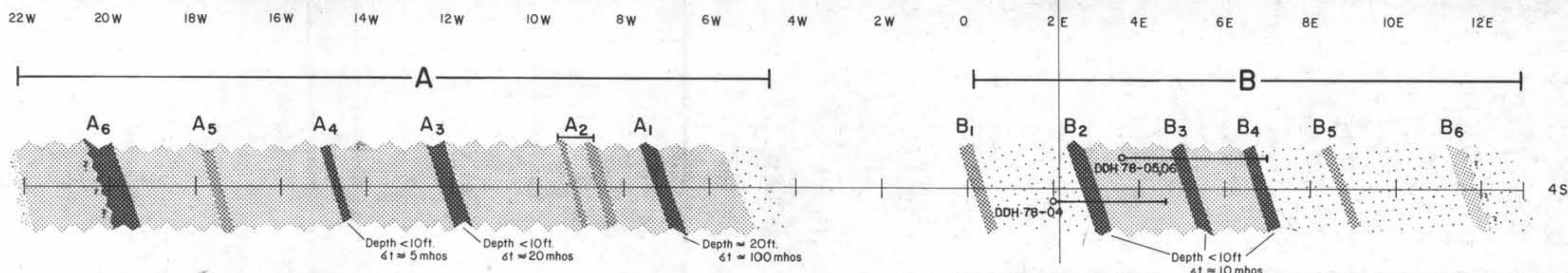


GROUP C
LINES 20S & 24S
CLAIMS P21, P22, P24, P39, GOOF 2



GROUP B
LINES 4S & 12N
CLAIMS D2, D19, P19, P20, P37, GOOF 1

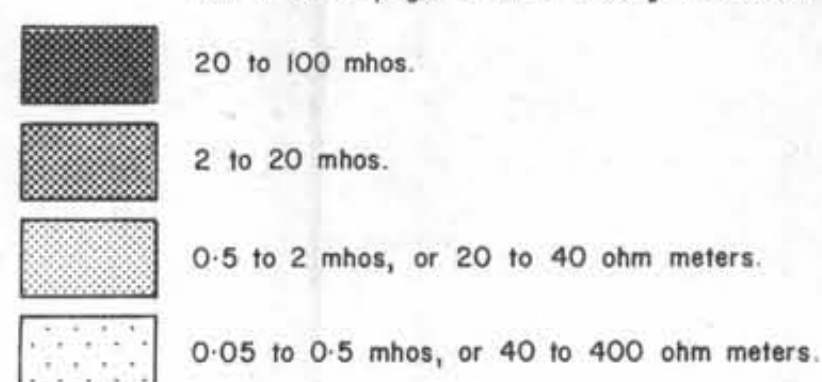


MINERAL RESOURCES BRANCH
ASSESSMENT REPORT
7149

part 282
GROUP A
LINES 36N, 40N & 44N
CLAIMS D22, D24, D41

CONDUCTOR LEGEND

See table on pages 4 and 5 for significance of mho values.



GEOLOGY ADDED



ARCHER, CATHRO & ASSOCIATES LTD.

GATAGA JOINT VENTURE
DRIFTPLE CREEK PROPERTY
LIARD MINING DIVISION, B.C.
58° 04' N, 125° 50' W
N.T.S. 94-K-4W

**CONDUCTOR INTERPRETATION
and
DRILL HOLE LOCATIONS**

0 200 400 FEET

TO ACCOMPANY REPORT BY JOHN BETZ LTD., DECEMBER, 1978
REVISED BY R.C. CARNE, JANUARY, 1979